

KS28 REFERENCE SUBWOOFER



- + 3 dB SPL (vs. SB28)
- 79 kg / 174 lbs

- Fast and captive rigging
- Exclusively driven by LA12X

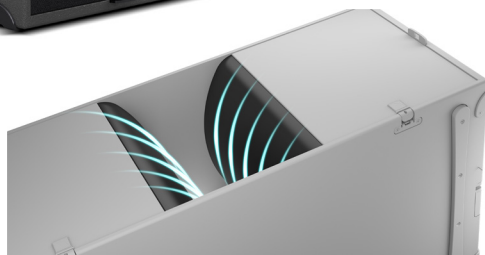
ELECTRO-ACOUSTICS



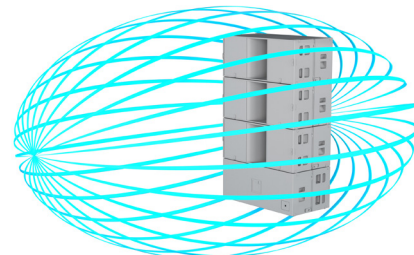
The KS28 is a reference subwoofer designed to extend the frequency response of large format systems. The KS28 features two high excursion, 18" direct radiating transducers mounted in a bass-reflex tuned enclosure. The L-Vents reduce turbulence and port noise at high levels while also increasing LF efficiency.

The KS28 operates from 25 Hz. The excursion capability of the transducer, combined with L-Vents contributes to deliver a high SPL, with low distortion. The KS28 can offer standard or cardioid directivity, by combining physical deployment and the suitable preset.

The KS28 is the first L-Acoustics enclosure to fully utilize the LA12X amplified controller power. The LA12X ensures advanced crossover functions, linearization and L-Drive protection of the transducers. Its onboard library offers standard and cardioid presets, each available with two low-pass filters to accommodate various coupling conditions and LF contour requirements.



L-Vents laminar vented ports

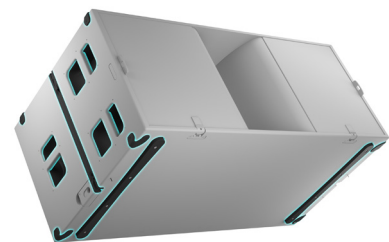


Rear SPL rejection (cardioid)

PHYSICAL

The KS28 cabinet is assembled with birch and beech plywood panels. The use of panels optimized for thickness and combined with stiffeners gives the KS28 maximized internal volume, mechanical integrity and a low weight of 79 kg. It features six ergonomic handles for a solid grip and efficient handling. Bottom and side runners ensure safe stacking. A two-point suspension system is flush-mounted into the cabinet.

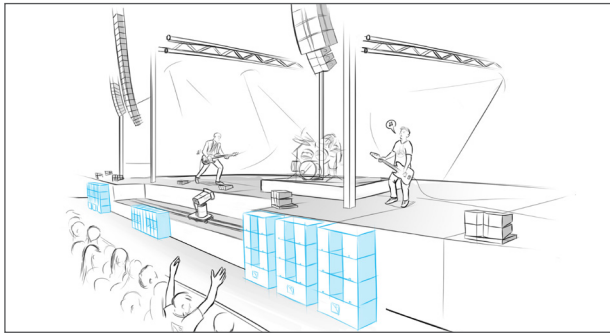
KS28 has been weatherized to achieve an IP55 rating for outdoor operations.



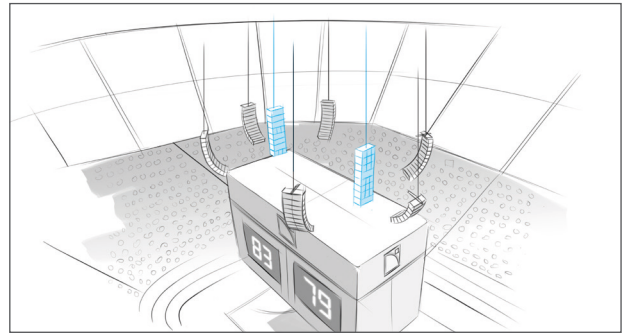
Ergonomic handles; ground and side runners; flush-mounted rigging

APPLICATIONS AND BENEFITS

The KS28 is the ideal companion to large format systems in stacked or flown deployments. KS28 can significantly boost the LF extension and contour of line sources.



Festival subwoofer system



Installed arena cardioid system


RIGGING

The KS28 can be stacked horizontally or vertically in standard or cardioid arrangements.

	Standard	Cardioid
Vertical ¹		
Horizontal		

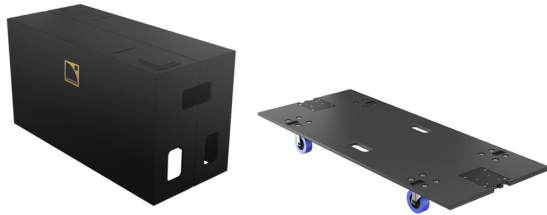
¹ - Possible on KS28-CHARIOT up to 4 units

With KS28-BUMP, KS28 can be flown in vertical arrays of standard or cardioid arrangements, up to 16 units.

	Standard	Cardioid
KS28-BUMP		

TRANSPORTATION ACCESSORIES

KS28-PLA: removable front dolly on wheels (one KS28)
KS28-COV: protective cover (one KS28)

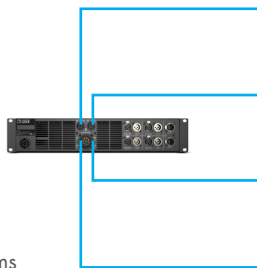


KS28-CHARIOT: chariot for up to four KS28
KS28-CHARIOTCOV: protective cover for three or four KS28 on KS28-CHARIOT

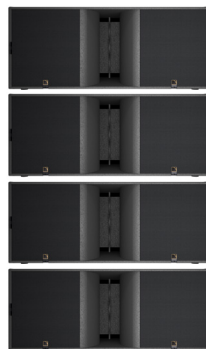


AMPLIFIED CONTROLLER

LA12X: amplified controller with DSP



4 x 2600 W/4 ohms
 4 inputs x 4 outputs architecture
 Max 4 enclosures per amplified controller



LA-RAK II AVB: touring rack containing three LA12X, with power, audio and network distribution



ASSOCIATED ENCLOSURES

K1/K1-SB



K2/K1-SB



K3



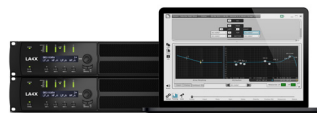
SOFTWARE

SOUNDVISION: simulation software



3D electro-acoustic & mechanical simulation software

LA Network Manager: control & monitoring software



Real-time control and monitoring up to 253 units
 Multiple network topologies



SB15m



SB18



SB18 (i/m)



K1-SB



SB28



KS28

Subwoofers: a complete range for professional sound reinforcement

L-Acoustics subwoofers complement systems in applications where extended bandwidth is required.

All subs incorporate high excursion drivers, ultra-low vibration walls and laminar airflow L-Vents with a flared profile, resulting in dramatic reduction of port noise, maximized dynamics, power handling and an exceptional level of performance.

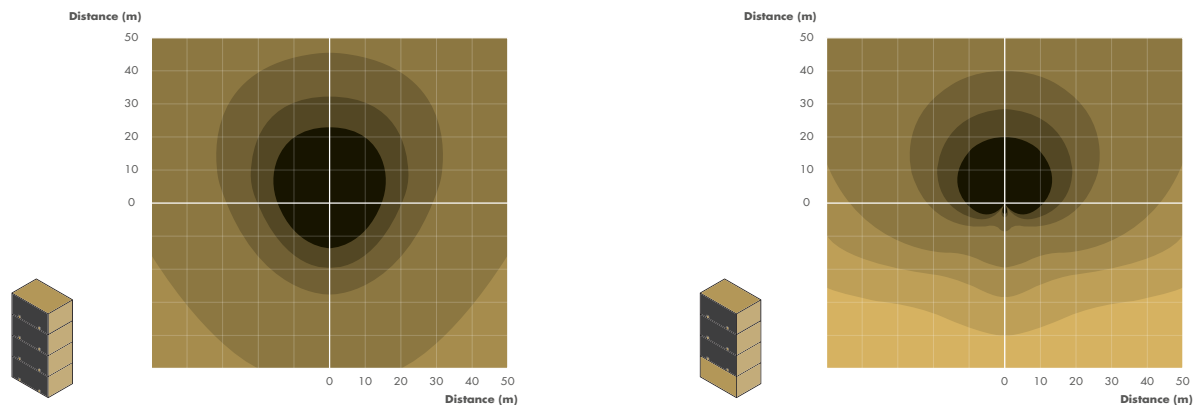
KS28 SUBWOOFER



Description	High power subwoofer: 2 x 18" amplified by LA12X
Low frequency limit (-10 dB)	25 Hz ([KS28_100])
Maximum SPL¹	143 dB ([KS28_100])
Directivity	Standard or cardioid
Transducers	2 x 18" neodymium, aluminium die cast basket
Acoustical load	Bass-reflex enclosure, L-Vents
Nominal impedance	4 Ω
Connectors	IN: 4-point speakON®
Rigging and handling	Flush-fitting 2-point rigging system 6 ergonomic handles 2 ground runners 8 side runners
Weight (net)	79 kg / 174 lbs
Cabinet	Premium grade beech and birch plywood
Front	Steel grill with anti-corrosion coating Acoustically neutral 3D fabric
Rigging components	High grade steel with anti-corrosion coating
Finish	Dark grey brown PANTONE® 426 C
IP	IP55

¹ Peak level at 1 m under half space conditions using pink noise with crest factor 4 (preset specified in brackets).

ISOCONTOUR



► SPL mapping of a block of four KS28 in standard (left) and cardioid (right) arrangements, using surfaces of equal sound pressure with three dB step colored scale.

DIMENSIONS

